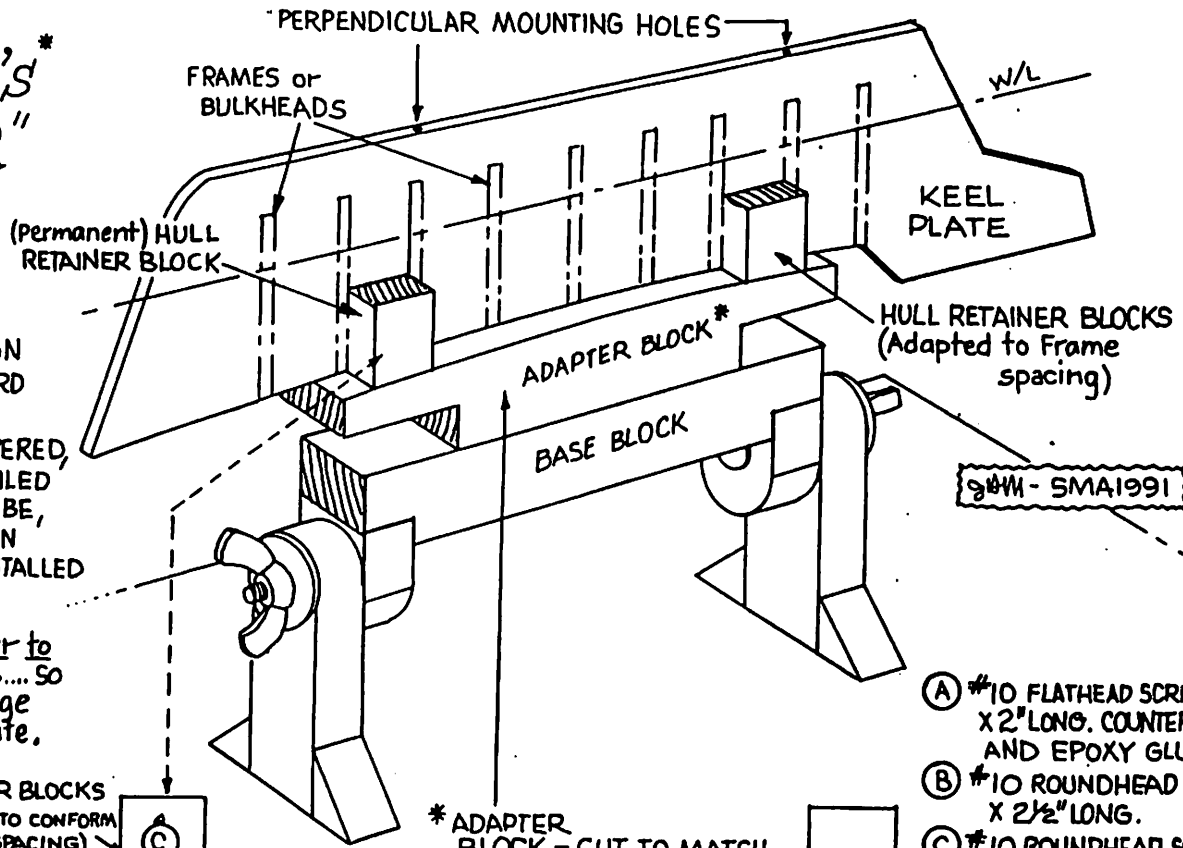


Ed Averkieff's "HULL-HELPER" (BUILDING JIG)

* PRESIDENT - 1991,
SHIP MODELERS ASSN. OF
SO. CALIFORNIA

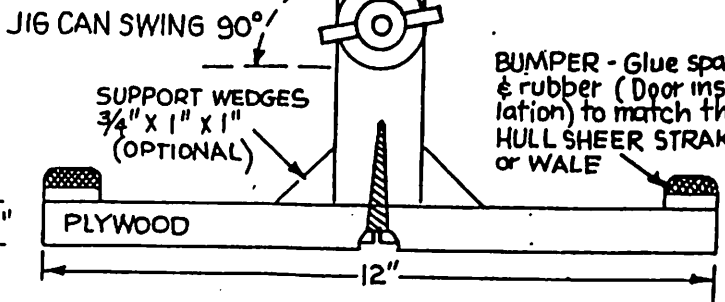
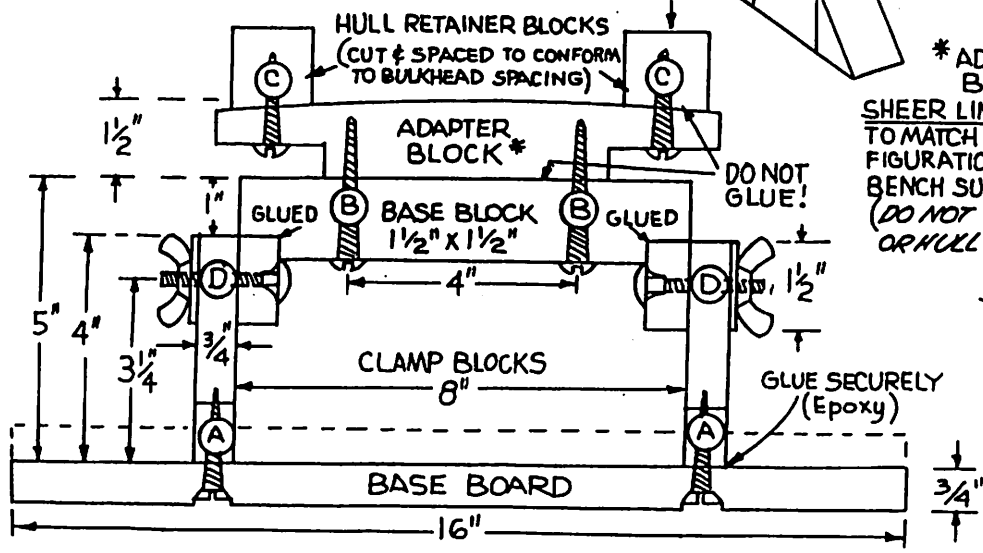
BY USING A 30°/60° TRIANGLE TO ALIGN THE KEEL PLATE @ 90° TO THE BASE BOARD PRECISE MOUNTING HOLES MAY BE DRILLED. HULL CAN BE PLANKED, COPPERED, PAINTED, CHAIN-PLATED AND BOW-DETAILED WHILE INSTALLED IN THIS JIG. IF NEED BE, THE HULL CAN BE REMOVED TO WORK ON DECK OR BULWARK DETAILS, THEN REINSTALLED ON THE "HULL-HELPER."

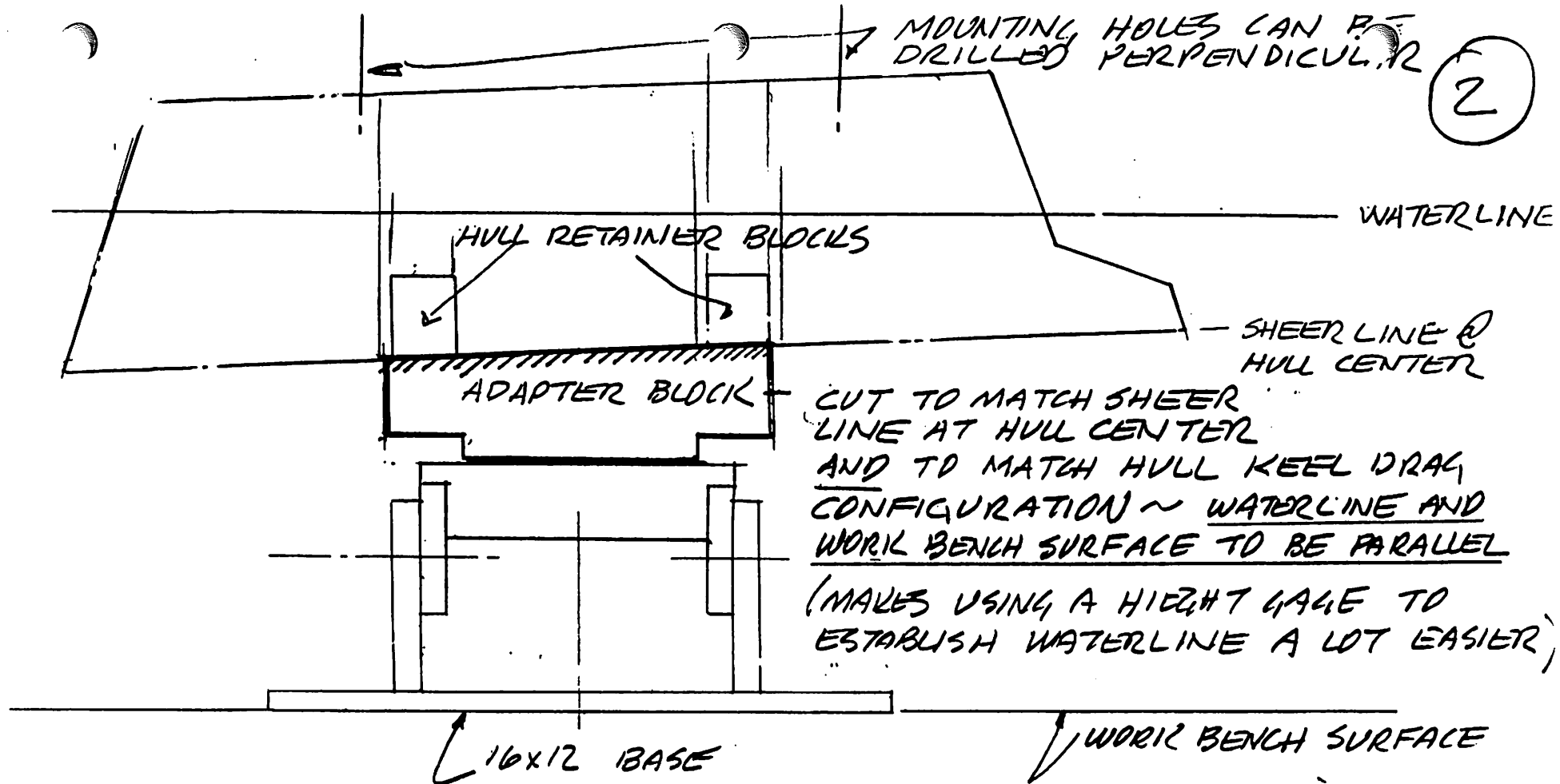
This device also raises the Hull closer to the eyes of us near-sighted Myopics.... so we can see without glasses.... a fringe benefit you normal guys can't appreciate.



- (A) #10 FLATHEAD SCREWS X 2" LONG. COUNTERSINK AND EPOXY GLUE
- (B) #10 ROUNDHEAD SCREWS X 2 1/2" LONG.
- (C) #10 ROUNDHEAD SCREWS X 2" LONG
- (D) 5/16" X 2 1/4" CARRIAGE BOLT, 1 1/2" DIA. WASHER & 5/16" WING NUT.

* ADAPTER BLOCK - CUT TO MATCH SHEER LINE @ HULL CENTER AND TO MATCH HULL KEEL DRAG CONFIGURATION. WATERLINE & WORK BENCH SURFACE TO BE PARALLEL. (DO NOT GLUE TO BASE BLOCK OR HULL RETAINER BLOCK!)





THIS ALIGNMENT ALLOWS PRECISE DRILLING OF MODEL BASE MOUNTING HOLES AND SERVES AS A GUIDE IN COPPERING

HULL CAN BE COMPLETED INCLUDING COPPERING, PAINTING, CHAIN PLATE AND BOW DETAILS WHILE INSTALLED ON THE FIXTURE. IF NEEDED HULL CAN BE REMOVED TO ADD DECK OR BULLWARK DETAILS THEN REINSTALLED ON FIXTURE

ALSO RAISES THE HULL UP FROM THE DESK WHERE US NEAR SIGHTED MYOPICS CAN GET A LOOK AT IT WITHOUT GLASSES (FRINGE BENEFIT YOU NORMAL GUYS DON'T APPRECIATE)