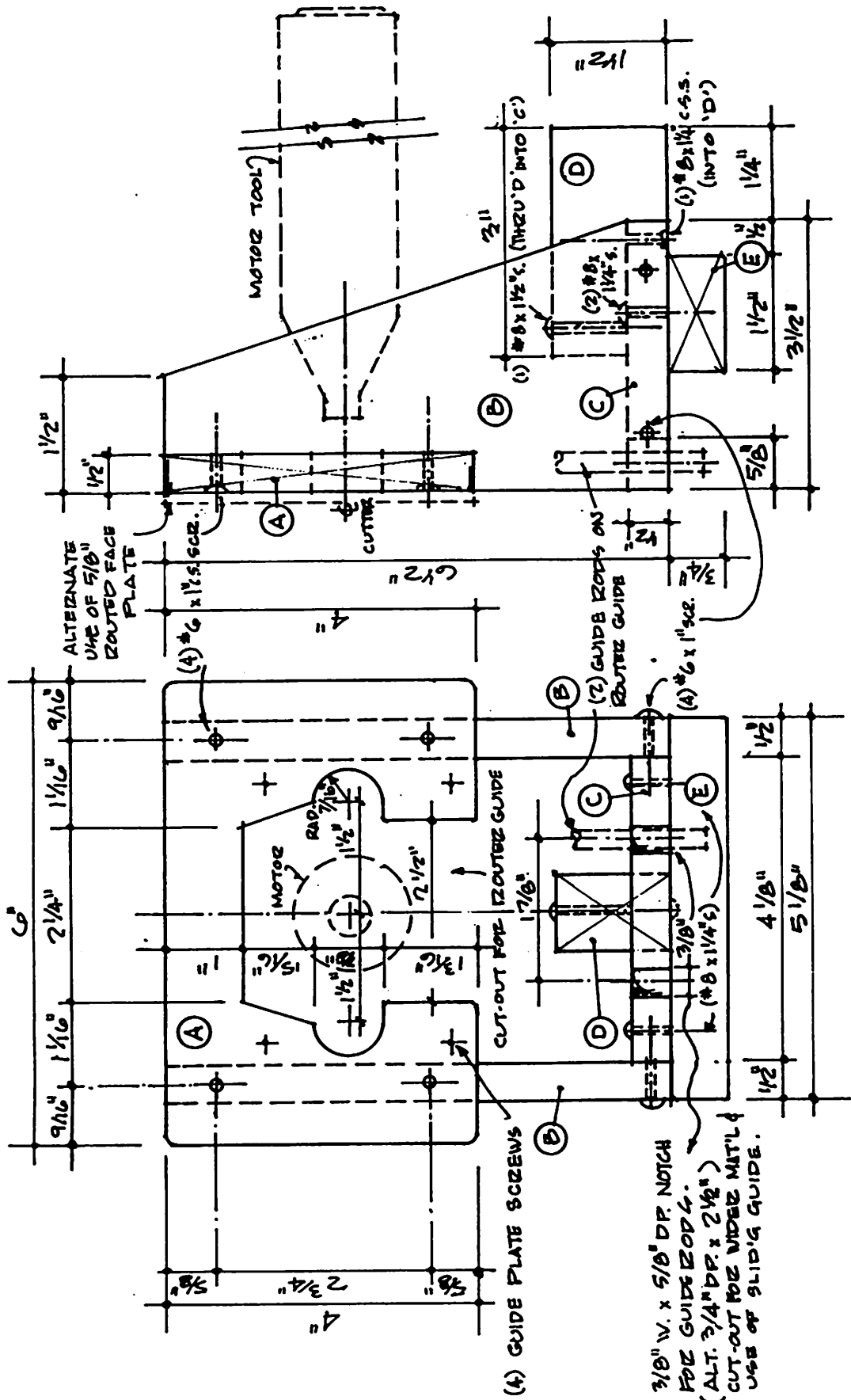


ROUTER MOUNT

(P50)



• FRONT • SCALE: 1/2 SIZE • SIDE •
 • SUGGEST TO GLUE & SCREW UNIT FOR RIGIDITY.

ROUTER MOUNT FOR VERTICAL & HORIZONTAL USE

- (A) • 1/2" PLY x 4" x 6" • FACE PLATE •
 - (B) • " x 3 1/2" x 6 1/2" (2) • SIDES •
 - (C) • " x 3 1/2" x 4 1/8" • BASE •
 - (D) • HARDWOOD • 1" x 1 1/2" x 3" • VERTICAL VICE CLAMP •
 - (E) • " • 3/4" x 1 1/2" x 5 1/8" • HORIZONTAL VICE CLAMP •
- USES: PLANER • SANDER (DRUM) • ROUTER •
 (USING DREMEL ROUTER ATTACHMENT)
 • FACE MOUNT TO (A) OR ROUTE-IN FLUX •
 USING 5/8" PLY