

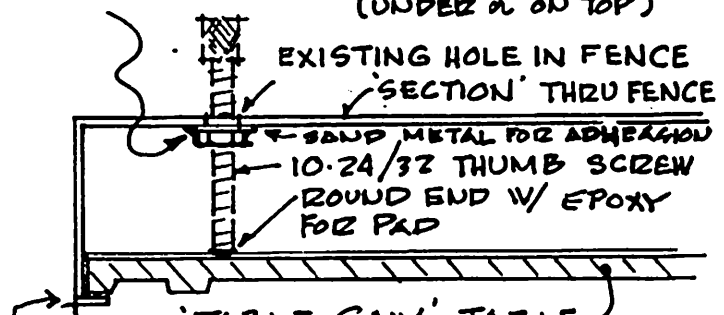
Q85

QUICK TOOLS - SAW FENCE LOCK

An improvement for your Dremel saw, ----- from Dick Roos

DZEMEL SAW FENCE LOCK

MAKE 'NUT' FROM PC. OF NYLON & SELF-TAP (PRIOR TO INSTAL'N) FOR SNUG FIT.
EPOXY 'NYLON' NUT TO FENCE (UNDER or ON TOP)



I USE A 'SLIP-COVER' (PLYWOOD) FENCE, OVER METAL FENCE, THAT ADJUSTS ANY RAIS'G @ BOTTOM & ASISTS THE FLOW OF WOOD THRU SAW. ALSO ADJUST BOTTOM LIP OF FENCE FOR MIN. PLAY.
(Roos)