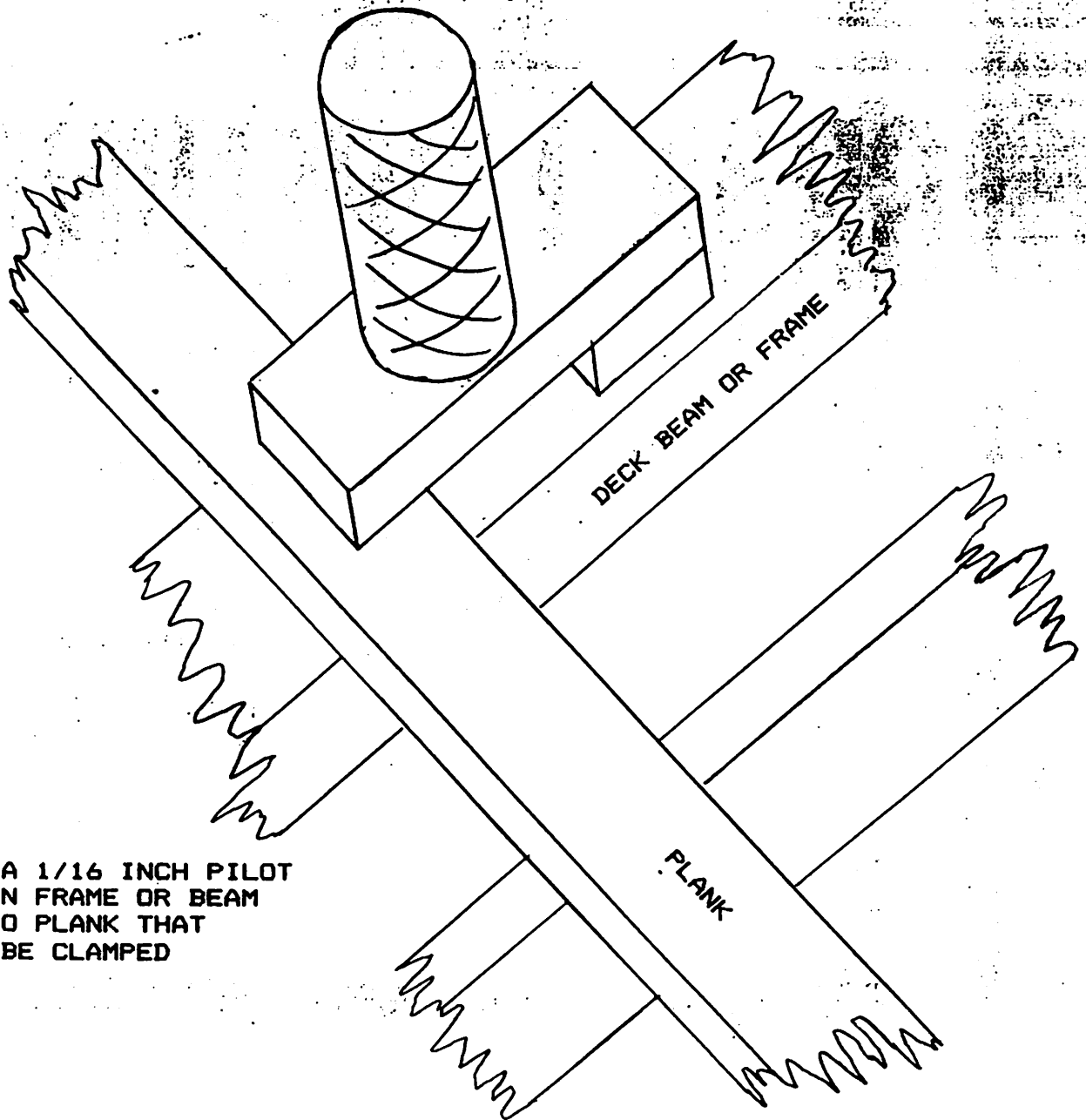
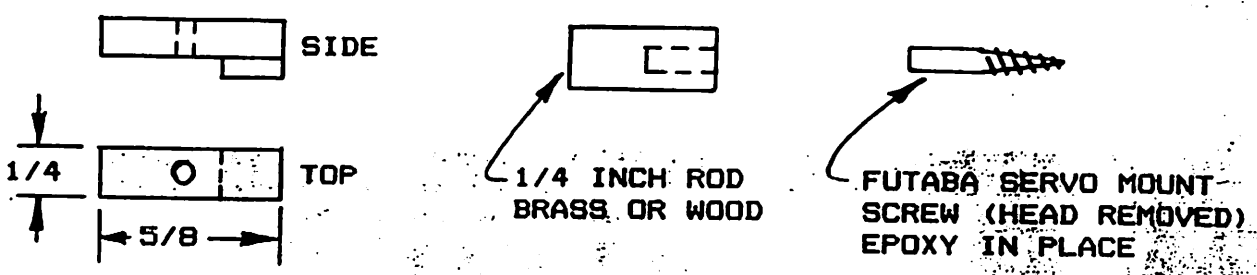


# PLANKING - SCREW CLAMPS

(P. 60)

## SCREW CLAMP FOR PLANK ON FRAME USE



DRILL A  $1/16$  INCH PILOT HOLE IN FRAME OR BEAM NEXT TO PLANK THAT IS TO BE CLAMPED

SUBMITTED BY CHARLES PIPES