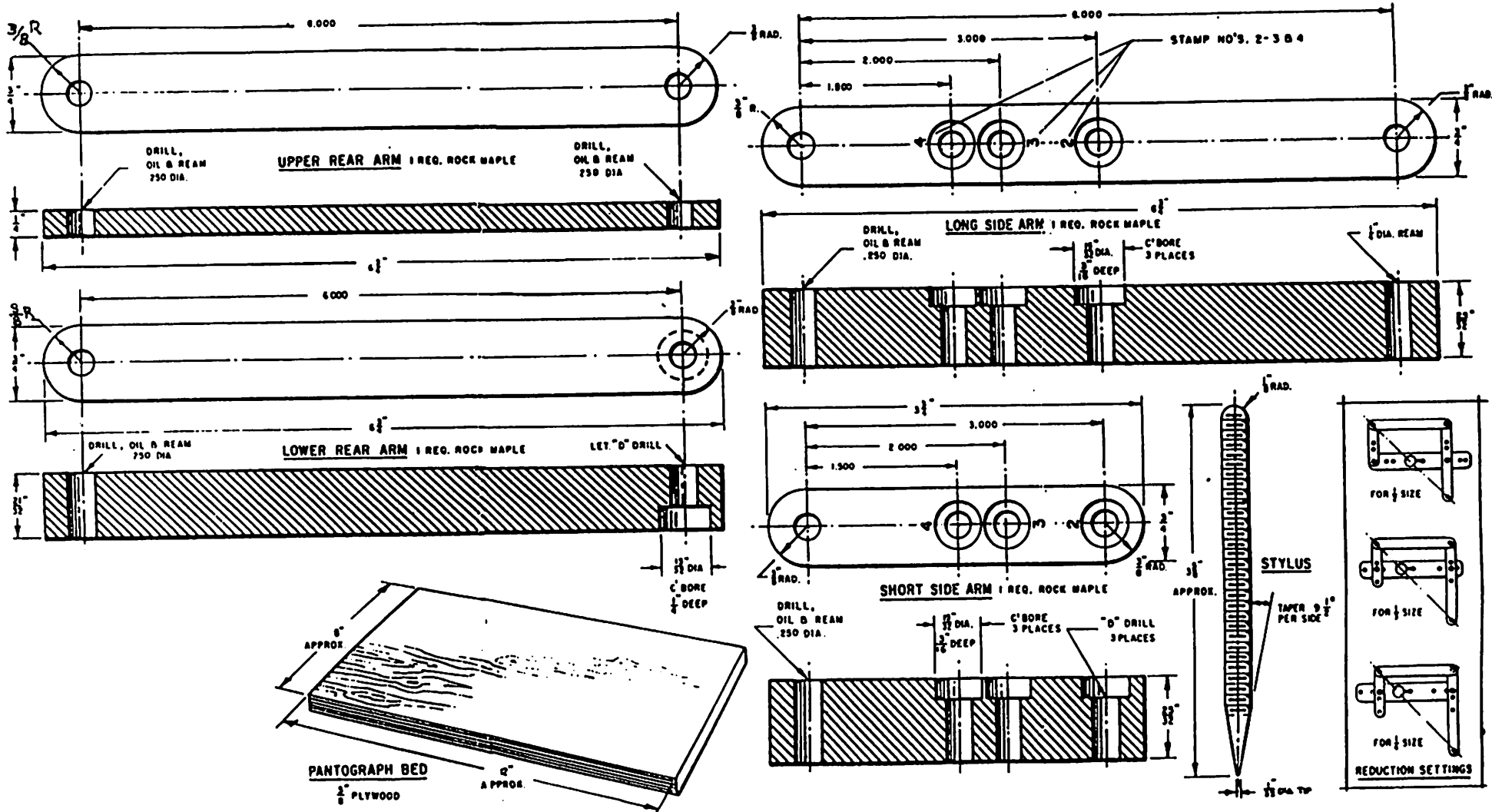


# 3-D Carving Pantograph



## MATERIALS LIST — CARVING PANTOGRAPH

No. Req'd	Size and Description	2	1/4" - 20 x 1 3/4" N.C. hex head cap screw
2	1 1/2" O.D. x 17/64 I.D. x .060 thick 1" dia. nylon washer	1	1/4" - 20 x 2" N.C. hex head cap screw
10	9/16 O.D. x 17/16 I.D. x .060 thick nylon washer	1	1/4" - 20 x 2 3/4" N.C. hex head cap screw
2	9/16 O.D. x 9/32 I.D. x 3/64 thick steel washer	1	1/4" - 20 x 3" N.C. hex head cap screw
3	1/2" A.S.A. medium lock washer	1	6-32 x 1 1/4" rh machine screw
3	1/4" - 20 N.C. lock nut (plastic insert)	2	28 x 1 1/4" rh wood screw
7	1/4" - 20 N.C. standard hex nut	1	1/4" - 20 x 4" threaded rod
3	1/4" - 20 N.C. standard wing nut		
1	6-32 N.C. standard hex nut		

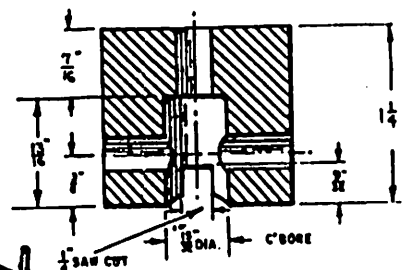
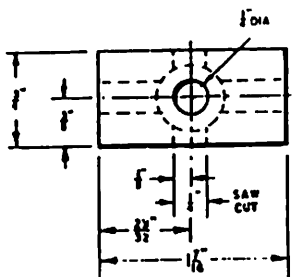
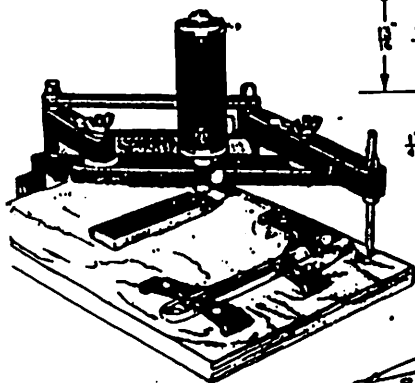
Lumber Required  
 1 x 6 x 14" clear rock maple — planed two sides to 3/4" thick  
 1 x 6 x 12" Br plywood — good one side  
 Cut clamps and blocks from scrap maple as needed

P15

# 3-D Carving Pantograph

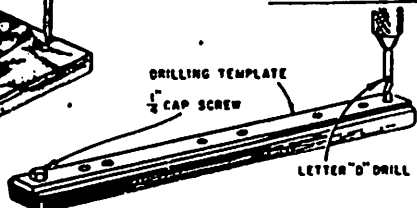
Copyright 1968 by  
Science and Mechanics Magazine  
450 East Ohio Street  
Chicago 11, Illinois

DESIGNED FOR SCIENCE AND MECHANICS  
BY BENCH-CRAFT



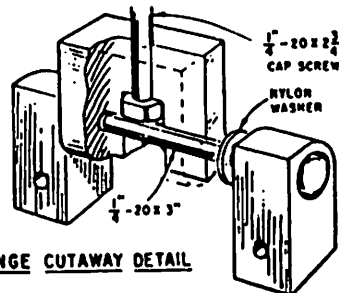
**HINGE BLOCK**  
1 REQ. (ROCK MAPLE)

### DRILLING DETAIL

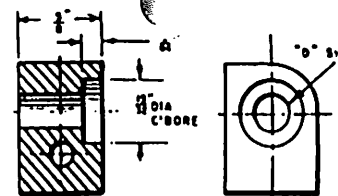


DRILLING TEMPLATE  
1/2" CAP SCREW

LETTER "D" DRILL

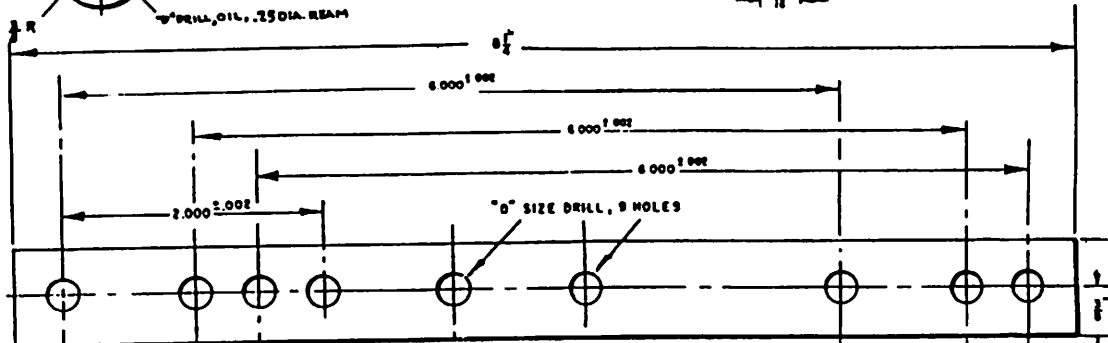
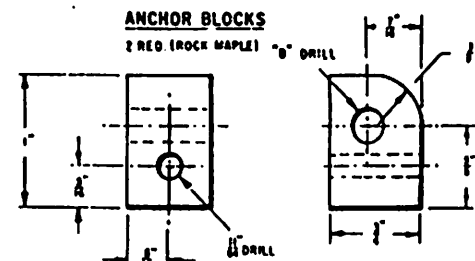


**HINGE CUTAWAY DETAIL**



**ANCHOR BLOCKS**

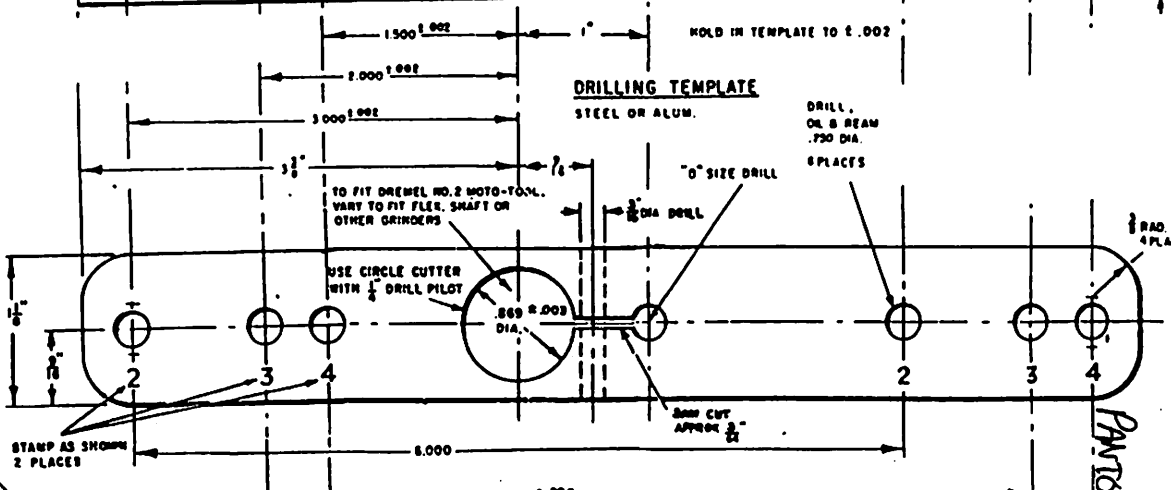
2 REQ. (ROCK MAPLE) "D" DRILL



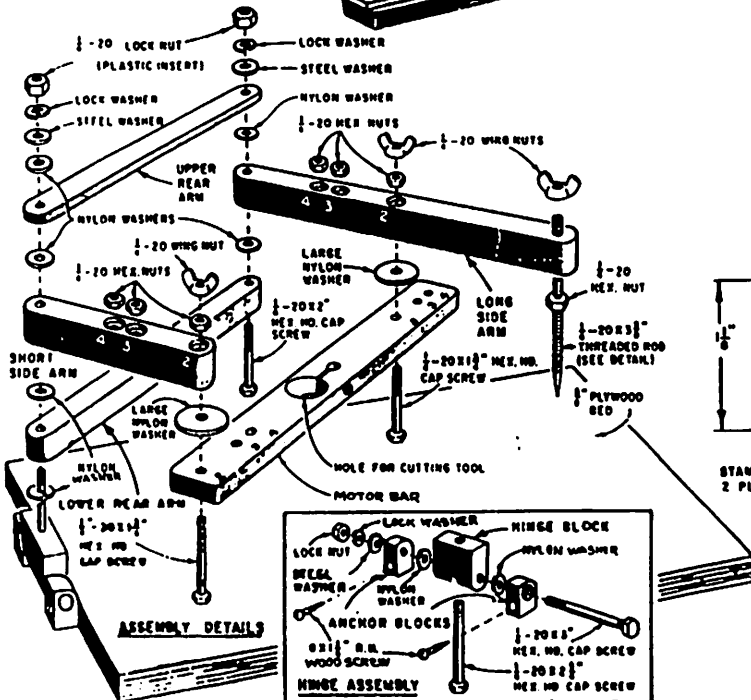
### DRILLING TEMPLATE

STEEL OR ALUM.

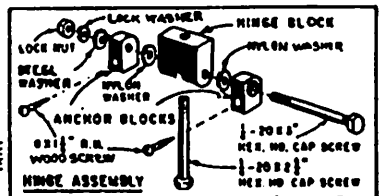
DRILL,  
DL B REAM  
.730 DIA.  
8 PLACES



**MOTOR BAR**  
1 REQ. (ROCK MAPLE)



### ASSEMBLY DETAILS



### HINGE ASSEMBLY

PANTOGRAPH  
1/16