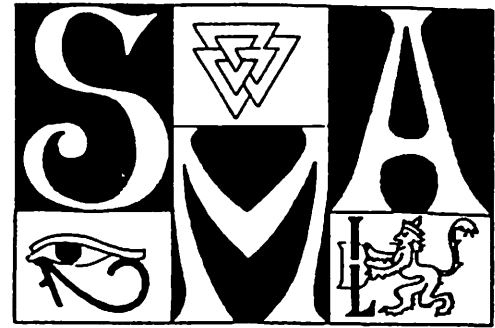


# SHIP MODELERS *Association*



FIFE RAILINGS



(FI)

Volume 19

SEPTEMBER, 1992

No. 9

President  
**Jack Moffett**  
(310-943-3148)

Vice President  
**Bob Beach**  
(714-529-1481)

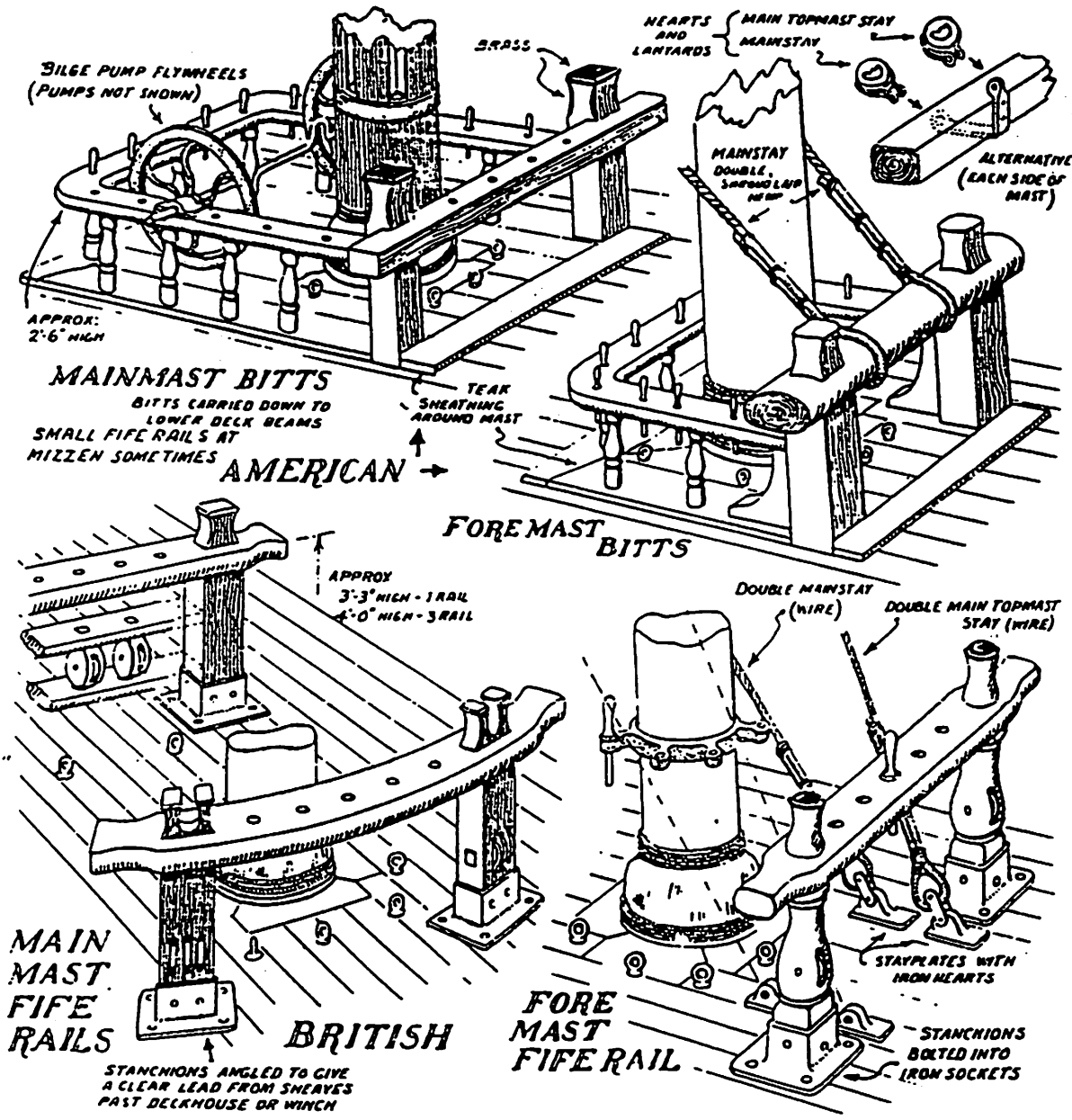
Secretary  
**Don Dressel**  
(714-949-6931)

Treasurer  
**Tom Palen**  
(714-525-0878)

Editor  
**Lloyd Warner**  
(310-326-5177)

Directors  
**Carl Arrowood**  
**Ed Averkieff**  
**Bob Beach**  
**Henry Bikhazi**  
**Jack Elem**  
**Paul Greenlee**  
**Richard Roos**

## FIFE RAILS and BITTS



STANCHIONS ANGLED TO GIVE A CLEAR LEAD FROM SHEAVES PAST DECKHOUSE OR WINCH

September Meeting

Wednesday, September 16, 1992

Bring Your Models !!!