

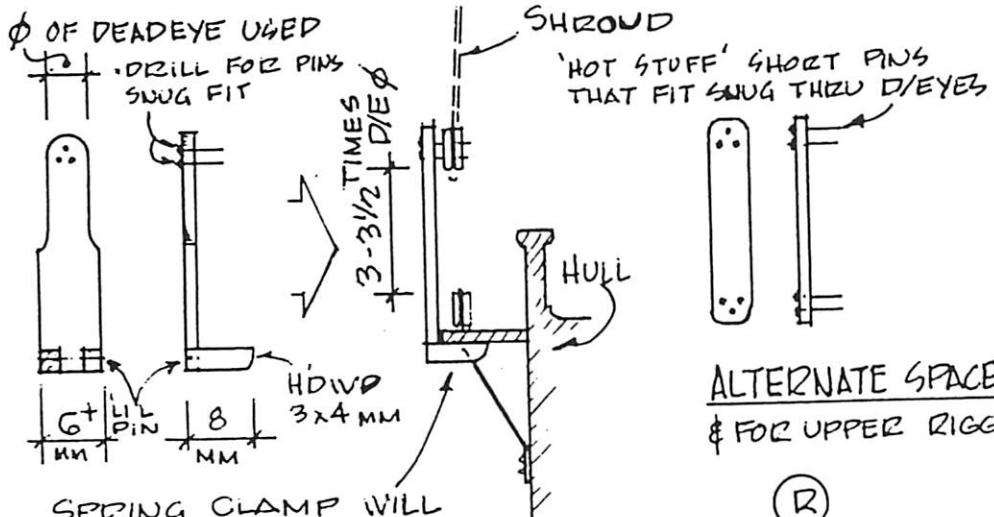


# Pearls FROM THE CHEST

Some tips from members of the crew

From Dick Roos.

## DEADEYE SPACERS

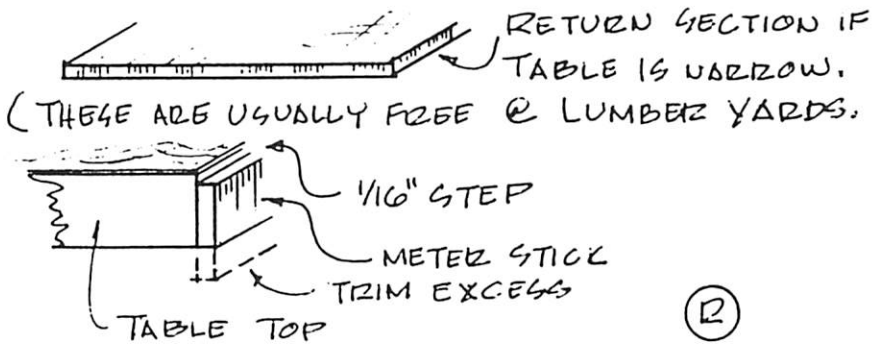


SPRING CLAMP WILL HOLD SPACER TO CHANNEL WHILE TEMPORARILY SECURING SHROUD, REMOVE SPACER & SEIZE. MAKE FOR YOUR BASIC Ø FOR FUTURE USE.

ALTERNATE SPACER & FOR UPPER RIGGING

(R)

- GLUE & TACK METRIC YARDSTICK (1-METER) TO FACE OF SMALL WORK TOP FOR QUICK SIZING.



(R)