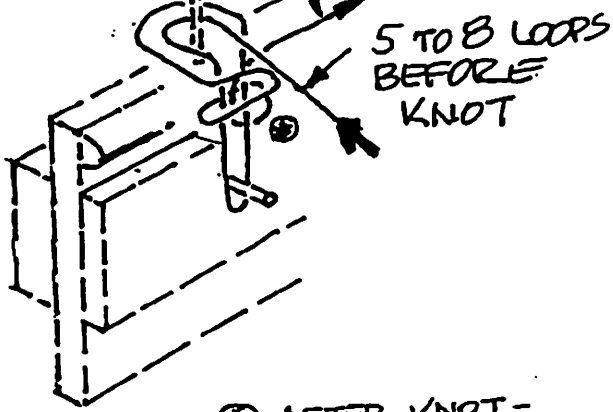
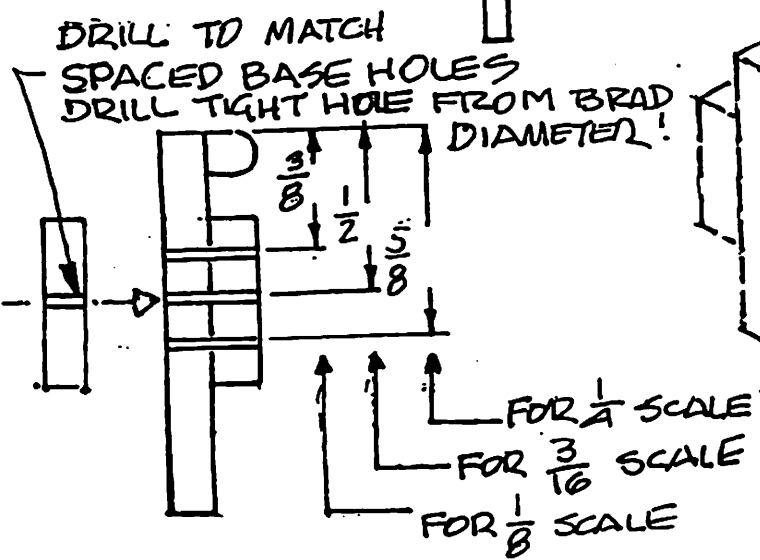
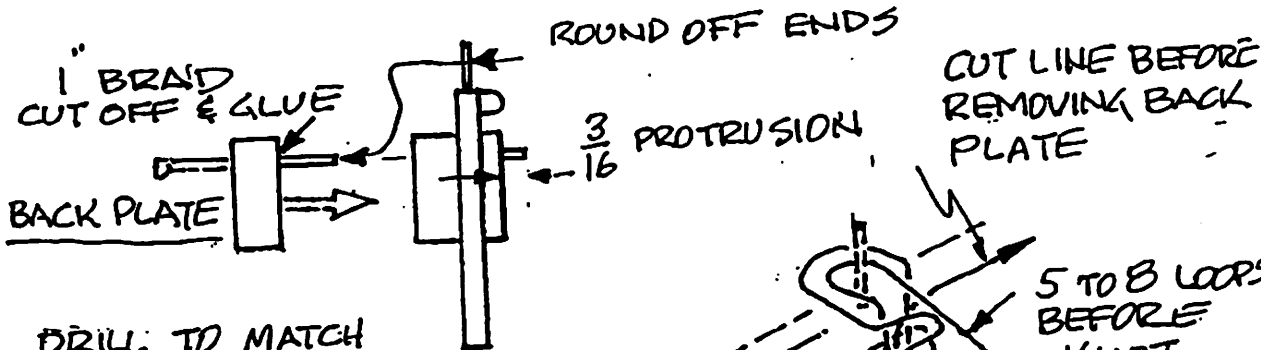
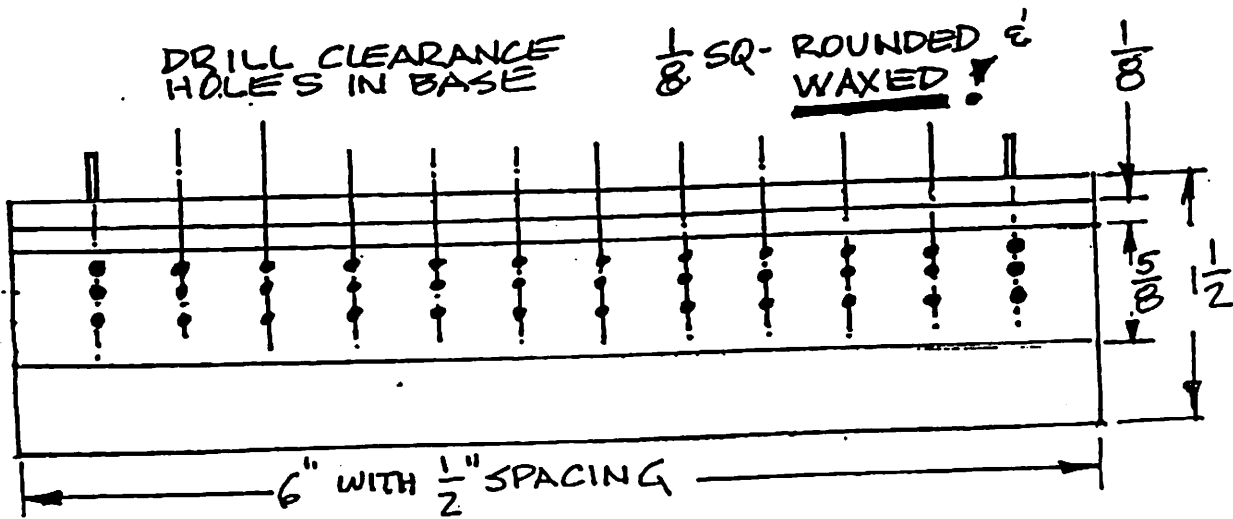


PIN RAIL RUNNING RIGGING LINE TERMINATION ASSEMBLY

ED AVERKIEFF



⊕ AFTER KNOT - SECURE WITH GLUE (ZAP) BEFORE NEXT WRAP

REMOVE BACK PLATE AFTER WRAPPING IS COMPLETE



Pearls FROM THE CHEST

Some tips from members of the crew

MAKING BELAYED LINES

by Don Dressel

One of the final items to be installed on a ship model are the coiled lines which hang from the belayed pins. Below is a sketch of jigs used which make beautiful coiled lines. The exact size of the jigs used depends on the scale of your model.

Jig No. 1 is used to coil and seize the line. Wind the line around the jig as indicated. Bring the end of the line up to the center when you have as many turns as needed, make a tight half hitch followed by several turns and another half hitch. Slide coil off Jig No. 1 and secure ends with a touch of diluted white glue.

Next, use Jig No. 2 to form coil as indicated, using diluted white glue again to this time soak the coils and let dry to hold their shape. When dry, they can be removed from Jig No. 2 and installed on your model with a touch of white glue.

The dimensions "X" and "Y" in the two jigs are again determined by your ship model and scale.

