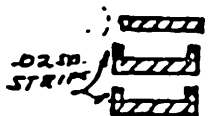
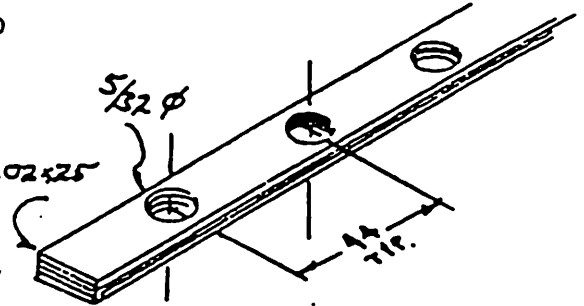


BUILDING BLOCKS

from Michael J. Heinrich

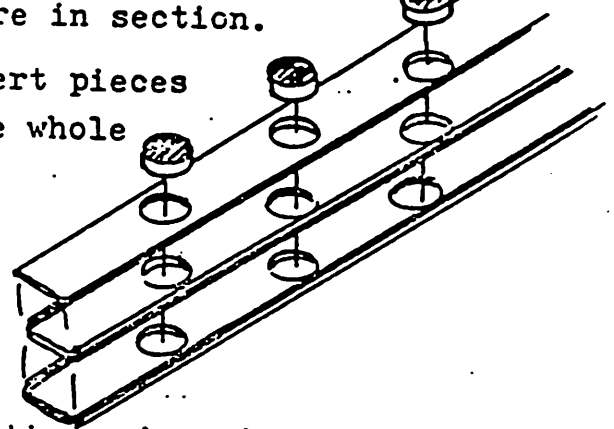
Some methods for making up a variety of blocks; my sketches will illustrate an 8" double block, inner strop, ca. 1900--1" scale.

1) Select a dowel size corresponding to the diameter of sheave; drill a row of holes in the number of strips you need to build up the block. Spot-glue the .020"sq. strips at the end with Hot Stuff--and mark a datum on each strip so you don't flipflop 'em.



2) Separate the planks and glue four .020"sq. strips on two of the planks, as shown here in section.

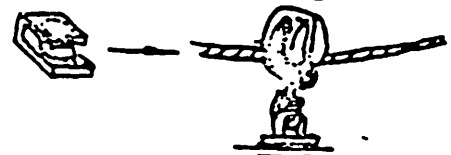
3) Stack the strips as shown in 2), insert pieces of dowel in the holes, and Hot Stuff the whole thing together.



4) Cut the individual blocks out & drill for the appropriate ironwork.

Trim, sand fair, finish. Although the cross-grain construction makes the blocks a little fragile, remember the doweling and wire will form an integral structure which will take all the load of the rigging.

NOTES:--If you do manage to break a block, save it to make snatchblocks for running tackle.



--The drawback with this method is the difficulty in faking the ironwork--remember, we're talking about late-model inner-strop blocks here; With a little thought you begin to see ways of incorporating brass strips into the laminate, but you have to go to wire and stock sheaves. I won't go into detail on this method--you might get a couple of small anvils, though, and forge your wire to simulate bar stock where it emerges from the block.

--If you leave the blocks wood-tone, consider the dark effect of the end grain of the dowel. Experiment with sealers.

--For the star or square plate over the sheave pin, try a small leather-tooling punch, then rub in reddish wood filler stick to simulate rusty iron--or gray or gold Rub n' Buff.